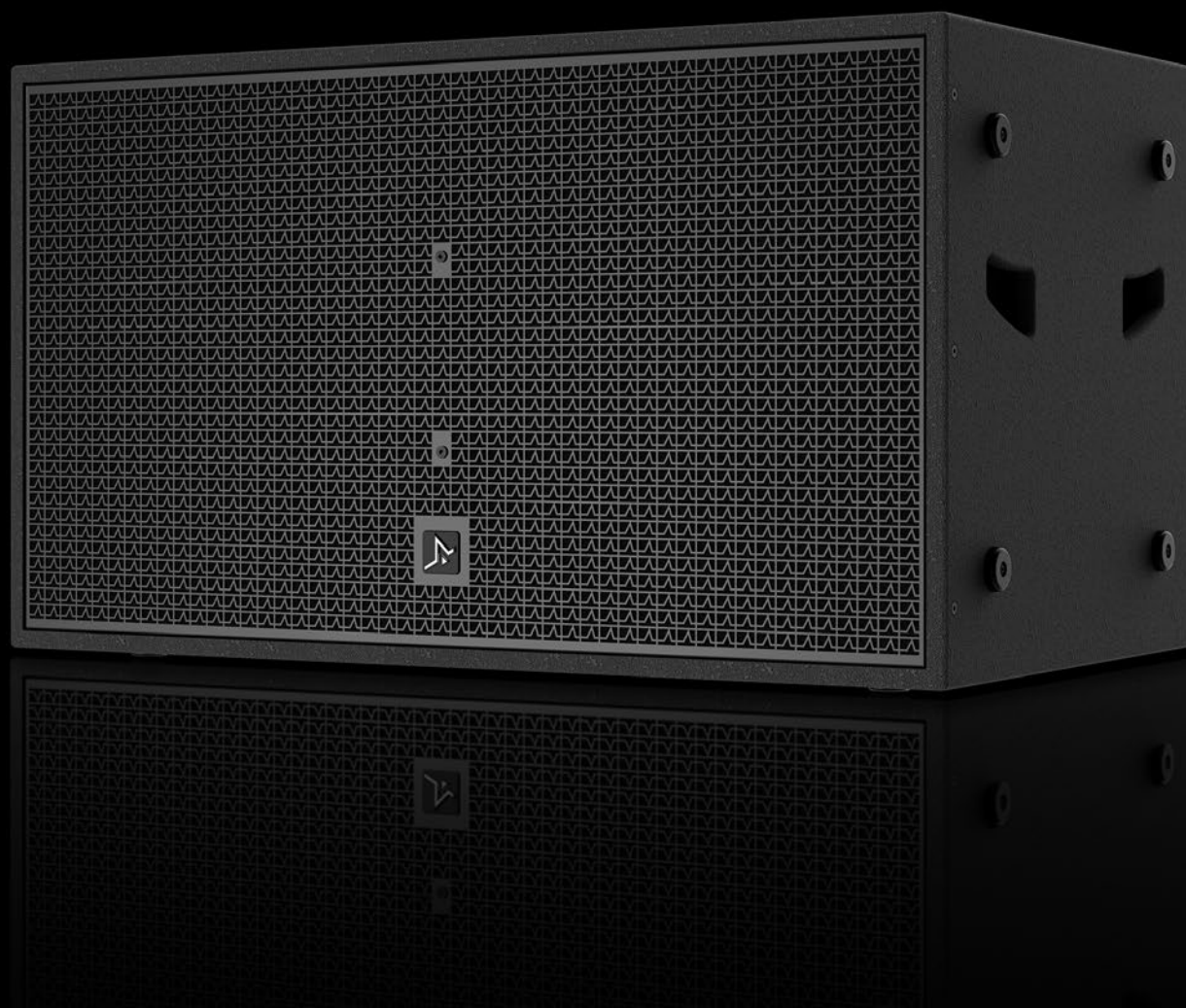


# GK-218

## GK SERIES



### FEATURES

- + Fane 18-inch, 4-inch (101.6 mm) voice coil, high-efficiency driver.
- + Ergonomic built-in handles.
- + Scalable low-frequency support for full-range loudspeakers.
- + Versatile and deep bass output.
- + Powerful performance with exceptionally smooth frequency response.
- + Void-free birch plywood cabinet construction.

### APPLICATIONS

- + Bass reinforcement in bars, nightclubs and KTV Part rooms.
- + Bass reinforcement for main PA systems in touring or permanent installations.
- + Suitable for medium to large stages, indoor or outdoor live performance, night- clubs, auditoriums and theatres.



# GK-218

## DUAL 18-INCH, PASSIVE SUBWOOFER SYSTEM

GK-218 is a single 18-inch high-efficiency subwoofer, which can provide a frequency range of 30 Hz - 200 Hz. It is designed to be used with full-range loudspeakers from the Fane Pro Audio GK series or other full-range models from the FPA family.

Powered by custom FANE 18-inch woofers with a 4-inch (101.6mm) high-power voice coil. GK-218 is designed to be dynamic with minimal port turbulence at high excursions. The large port design enhances the output efficiency of the system, increasing the output of ultra-low frequencies and reduction of non-linear distortion to produce 138dB SPL.

There are two built-in wooden handles on each side of the GK-218 enclosure to help stacking or ease of movement. Four rubber foot pads are installed at the bottom of the box and there are 4-foot pad recesses on the top side, which are convenient for ultra-low array stacking.

The cabinet is constructed from 18mm birch plywood and finished with a wear-resistant, black, water-based paint and finished with a black, perforated iron grille backed with an acoustically transparent wadding.



<b>Power Handling</b>	1600 W (AES)
<b>Program</b>	3200 W
<b>Peak</b>	6400 W
<b>Nominal Impedance</b>	4 Ω
<b>Average Sensitivity</b>	102 dB @ 1W/1m
<b>Calculated Maximum SPL / 1m</b>	134 dB continuous 140 dB peak
<b>Frequency Response</b>	33 Hz - 200 Hz (±3 dB) 28 Hz - 200 Hz (-10 dB)
<b>Manufacturing Consistency</b>	33 Hz - 200 Hz (±3 dB)
<b>Nominal Directivity (-6dB)</b>	Omnidirectional
<b>Recommended Amplifier</b>	≤ 3200 W @ 4Ω (no clip) in specified frequency response
<b>Recommended Crossover</b>	LPF: 70 Hz - 250 Hz 24 dB/oct Linkwitz-Riley HPF: 28 Hz 24dB/ Oct Linkwitz-Riley
<b>Crossover</b>	No, active usage only with external electronic crossover, Fane recommended DSP
<b>Low Frequency Driver</b>	2x Fane transducer, 8Ω impedance, 18" (457.2 mm) diameter, high temperature voice coil on glass fibre former

<b>Pole Mount</b>	35 mm Metal
<b>Connectors</b>	2 Neutrik Speakon NL4MP
<b>Cabinet</b>	CNC made with tongue and groove assembly, 18 mm void-free, exterior grade, birch plywood
<b>Finish</b>	Black, water-based paint
<b>Cabinet Size (HxWxD)</b>	580 x 1020 x 600 mm
<b>Shipping Carton Size (HxWxD)</b>	675 x 1120 x 695 mm
<b>Weight</b>	71 kg net 75 kg gross

